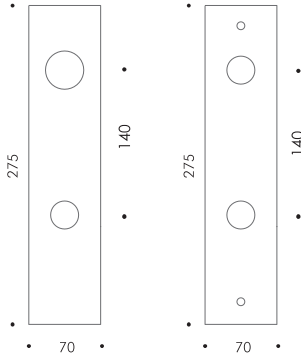
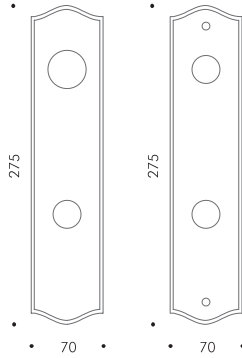


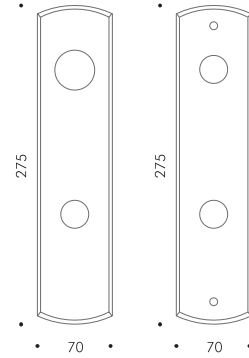
**P300 TUBULAR      P301 TUBULAR      P302 TUBULAR**



Available finishes:  
Polished Chrome  
Satin Chrome  
Satin Nickel  
Matte Black

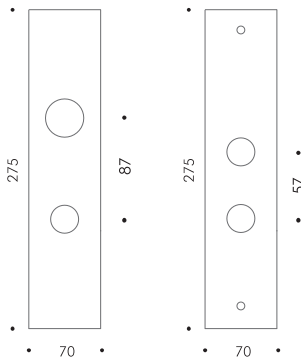


Available finishes:  
Satin Nickel

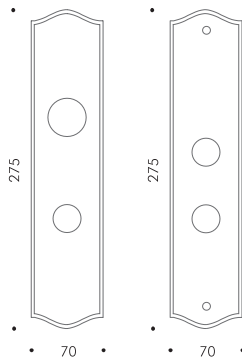


Available finishes:  
Polished Chrome  
Satin Chrome  
Satin Nickel  
Matte Black

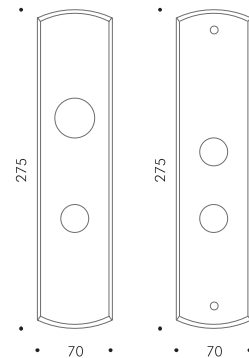
**P300 MORTISE      P301 MORTISE      P302 MORTISE**



Available finishes:  
Polished Chrome  
Satin Chrome  
Satin Nickel  
Matte Black



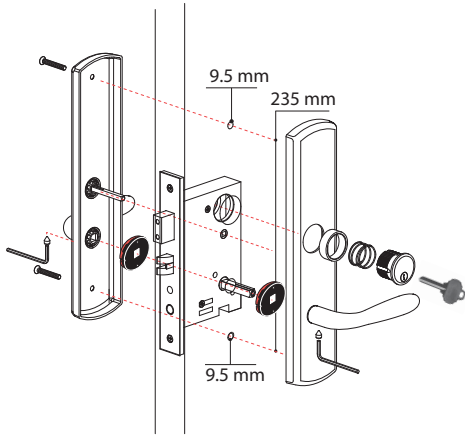
Available finishes:  
Satin Nickel



Available finishes:  
Polished Chrome  
Satin Chrome  
Satin Nickel  
Matte Black

# P300 SERIES MOUNTING

## INSTRUCTION AND TEMPLATE FOR INSTALLING P300 SERIES MORTISE LOCK WITH 2 3/4" BACKSET



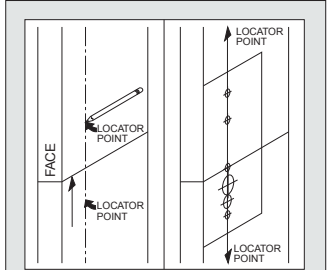
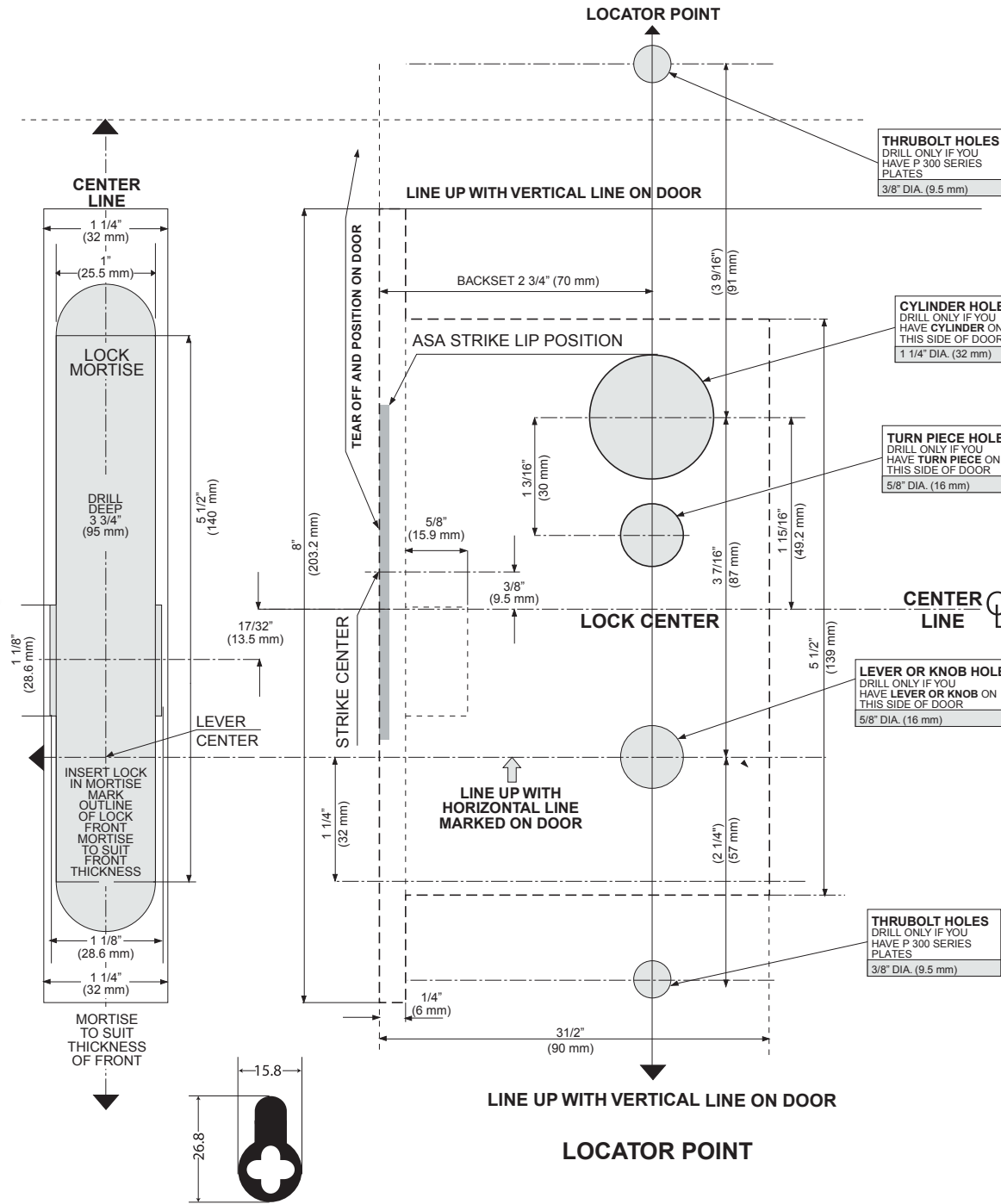
**PLEASE NOTE**

Red side

Black side

Springs are handed. **Black** must be facing you for **Right Hand Lever**. **Red** for **Left Hand Lever**.

**FOR OPPOSITE SIDE OF DOOR, TURN TEMPLATE OVER**



1. Mark door and position template on high side of bevel.  
Draw a horizontal line on both sides of door and lock face of door at desired height of lever or knob finished floor line.  
Mark 2 locator points on each side of door above and below horizontal line.  
Draw vertical line through 2 locator points.  
Detach door template and lock face door template.  
Position template on outside of door so horizontal center lines up with horizontal line on door and template locator points line up with vertical line on door.  
*Note: If mortise for strike has already been made in metal frame, position templates using strike mortise as reference. (see template)*
2. Position lock face template.
3. Mortise and drill door. Drill holes from each side of door.

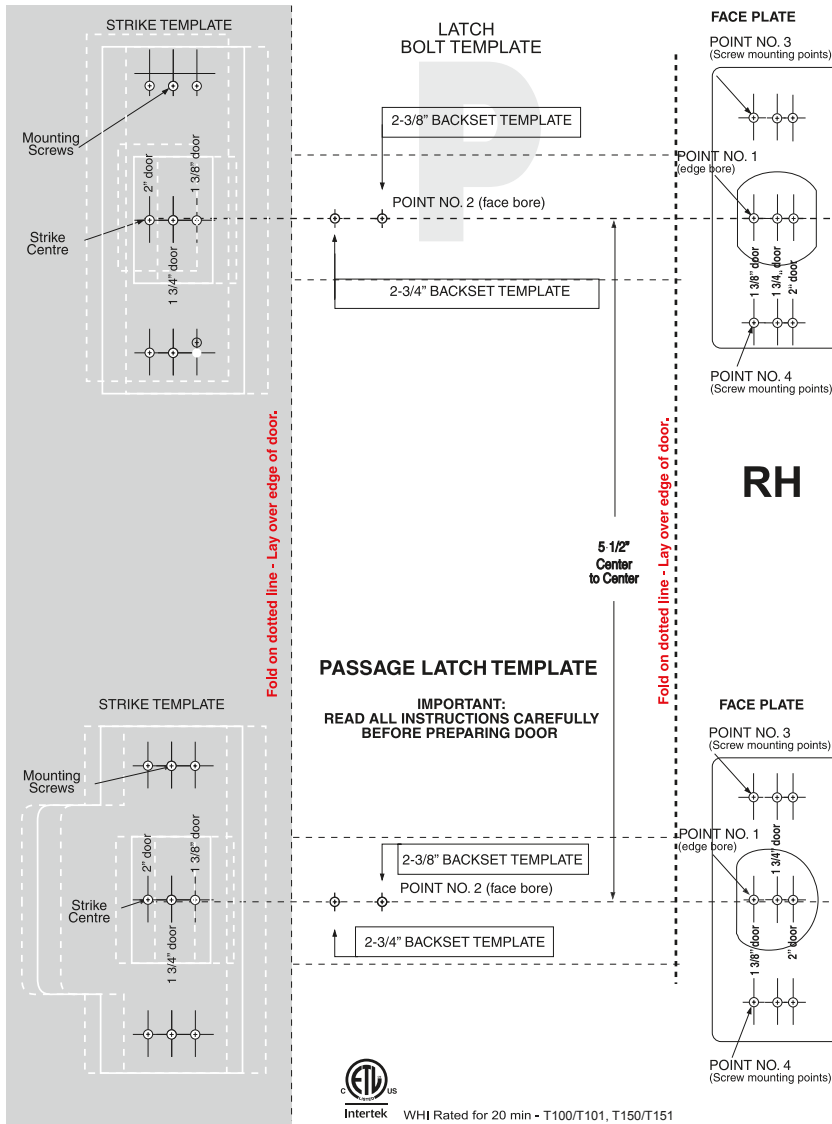
### DOOR PREPARATION CHART

Series	Outside				Inside			
	Lever Hole	Cylinder Hole	Turn Knob Hole	Plate Thru-Isill Holes	Lever Hole	Cylinder Hole	Turn Knob Hole	Plate Thru-Isill Holes
<b>M10 SERIES</b>								
Function	A	B	C	D	A	B	C	D
M1010	*	*	*	*	*	*	*	*
M1040	*	*	*	*	*	*	*	*
M1050	*	*	*	*	*	*	*	*
M1053	*	*	*	*	*	*	*	*
M1056	*	*	*	*	*	*	*	*
M1060	*	*	*	*	*	*	*	*
M1070	*	*	*	*	*	*	*	*
M1080	*	*	*	*	*	*	*	*
M1081	*	*	*	*	*	*	*	*
M1085	*	*	*	*	*	*	*	*
D190	*	*	*	*	*	*	*	*
D185	*	*	*	*	*	*	*	*

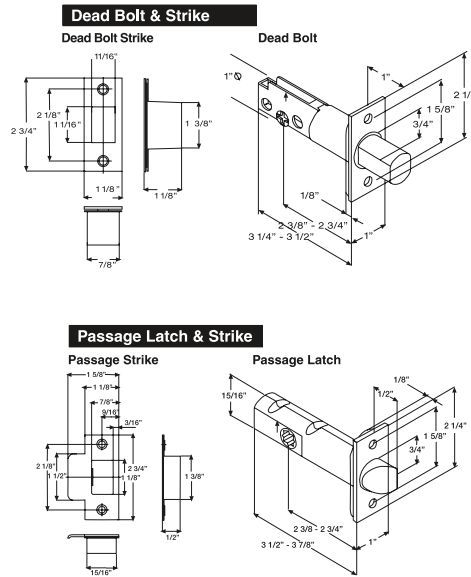
Template #012C - RH

NOTE: STRAIGHT CAM ONLY IS USED FOR HEAVY DUTY MORTISE

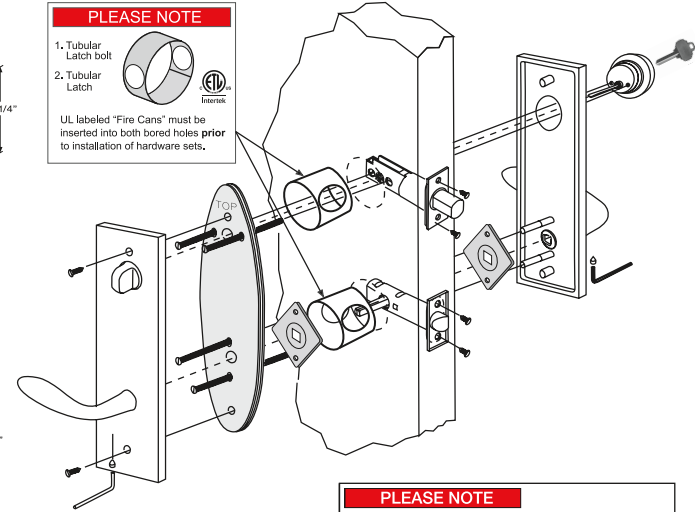
# Installation Instructions for ENTRY LOCK P300 - T150 - T151 - non-bored door condition



**TOOLS REQUIRED:**  
Drill, 1" dia. bit, 2 1/8" dia. bit, 1/8" dia. bit, Center Punch, Chisel, Hammer, Phillips Screwdriver.  
**BE SURE TO READ ALL INSTRUCTIONS BEFORE PREPARING DOOR.**



**PLEASE NOTE**  
1. Tubular Latch bolt  
2. Tubular Latch  
  
UL labeled "Fire Cans" must be inserted into both bored holes prior to installation of hardware sets.



**PLEASE NOTE**  
**Metal Springs are handed**  
Handing is indicated with arrow pointing to hinge location, also with either an "R" for RIGHT or "L" for LEFT.

<p><b>1. Position Template</b></p> <p>Top view of door illustrating bevel condition. Door Template</p> <p>Diagram A Diagram B</p> <p>Determine latch backset (2-3/8" or 2-3/4"). Fold enclosed template on dotted line and locate on door at desired height (diagram A). If door is bevelled (see diagram B), place folded edge on low side of bevel as shown above.</p>	<p><b>2. Mark Door</b></p> <p>Point 2 (face bore) Point 3 (screw mounting points) Point 1 (edge bore) Point 4 (screw mounting points)</p> <p>Mark door at points No. 1, No. 2, No. 3, and No. 4 and center punch for drilling.</p>	<p><b>3. Drill Edge Bore</b></p> <p>Point 1 (edge bore) 1" dia. drill bit</p> <p>Drill 1" dia. hole. 2-3/8" backset... <b>drill 3-5/8" deep.</b> 2-3/4" backset... <b>drill 4" deep.</b></p>	<p><b>4. Drill Face Bore</b></p> <p>2 1/8" dia. drill bit Point 2 (face bore)</p> <p>Keep drill perpendicular to door surface and drill through.</p> <p><b>Note for wood doors:</b> to avoid splintering, drill a centering hole through the door, then drill face bore from both sides.</p>	
<p><b>5. Position Faceplate</b></p> <p>Finished Faceplate</p> <p>Position finished faceplate over latch. Slide latch into edge bore. Check that screw mounting points are centered before tracing the outline of the finished faceplate.</p>	<p><b>6. Chisel Mortise</b></p> <p>1/8" dia. holes</p> <p>Remove latch. Drill 1/8" screw holes. Chisel out mortise 5/32" deep.</p>	<p><b>7. Insert Latch</b></p> <p>(UP)</p> <p>With "UP" side up, slide latch into edge bore.</p>	<p><b>8. Attach Faceplate</b></p> <p>Rotate head so angled side is toward strike when door closes. Position finished faceplate and fasten with two screws.</p>	<p><b>9. Install Strike</b></p> <p>Doorstop Strike Drill Template</p> <p><b>IMPORTANT</b> Before installing Strike, please mount hardware as shown in drawing above.</p> <p>Using strike template, mark jamb, drill screw holes and chisel mortise at proper location. Install strike.</p>

**NOTE:** Check to ensure face plate does not restrict free movement of the latch head. Repeat instruction 1-9 for latch bolt. Install trim.